

PHILIPS

**BROSSE A DENTS
HX9913/17**



**Sonic electric toothbrush
with app**

HX9901 HX9903 HX9911 HX9912
HX9913 HX9914 HX9917

Contents

General information **3**

Specifications

Consumer Replaceable Parts

Optional (accessories)

Functions/features explanation **5**

Our best ever toothbrush, for complete oral care

Proven to improve oral health

DiamondClean users experience improved oral health

Stay on track with a personalized progress report

Let the DiamondClean 9000 adapt to your needs

Personalized in-app coaching to perfect brushing

Optimize your brushing

Enjoy a stylish and user-friendly design

Service parts **6**

Exploded view **7**

Version history **8**

Important repair instructions

- No specific issues.

General information



Specifications

Color

- HX9901/03, HX9903/03, HX9911/03, HX9911/27, HX9913/03, HX9913/17, HX9914/55, HX9917/88 : White
- HX9911/09, HX9911/13, HX9911/39, HX9912/18, HX9913/13, HX9913/18, HX9914/54, HX9914/57 : Black

Modes

- **Clean:** For exceptional everyday clean
- **White+:** To remove surface stains
- **Deep clean+:** For an invigorating deep clean
- **Gum health:** Special attention to molars
- **3 intensities:** Low, Medium, High

Smart sensor technology

- **Pressure sensor:** Alerts when brushing too hard
- **Location sensor:** Tracks & improves coverage
- **Scrubbing sensor:** Guides to reduce scrubbing
- **3D mouth map:** Highlights trouble areas
- **TouchUp:** To address missed spots

Technical specifications

- **Power supply:** 110 - 220 V
- **Battery type:** Li-Ion
- **Rechargeable battery**
- **Operating time (full to empty):** Up to 2 weeks

Cleaning performance

- **Speed:** Up to 62000 brush movement/min
- **Performance:** Removes up to 10x more plaque
- **Health benefits:** Helps improve gum health
- **Whitening benefits:** Up to 100% less stains
- **Pressure feedback:** Ring lights up in purple, Vibrates handle to alert user
- **TouchUP:** Ensures 100% coverage
- **Timer:** BrushPacer and SmarTimer

Easy of use

- **Handle compatibility:** Easy click-on brush heads
- **Brush head recognition:** Syncs with optimal mode
- **Replacement reminder:** To always ensure best results, reminder icon lights up
- **Battery indicator:** Illuminated icon indicates battery life
- **Handle:** Slim ergonomic design
- **Display:** Illuminated display

Smart sensor technology

- **Pressure sensor:** Alerts when brushing too hard
- **Location sensor:** Tracks & improves coverage
- **Scrubbing sensor:** Guides to reduce scrubbing
- **Position sensor:** Guides to areas you missed (Only for HX9903/03)
- **3D mouth map:** Highlights trouble areas
- **TouchUp:** To address missed spots

General information

BrushSync Mode Pairing (Only for HX9912/18)

- **G3 Premium Gum Care brush head:** Pairs with Gum Health mode
- **W3 Premium White brush head:** Pairs with White+ mode
- **C3 Premium Plaque Defence:** Pairs with Clean mode

Connectivity

- **Bluetooth wireless technology:** Connected brushing app

Compatibility

- **iOS compatibility:** iPhone 4S or higher, iPad 3rd Gen or higher, with iOS7 operational system
- **Android compatibility:** Android phones, Bluetooth 4.0 enabled tablets

Items included

- **Handle:** DiamondClean Smart
- **Brush heads:**
 - HX9901/03:** 1 C3 Premium Plaque Control
 - HX9903/03:** 1 C3 Premium Plaque Control
1 G3 Premium Gum Care
1 W3 Premium White
 - HX9911/03:** 1 W3 Premium White
 - HX9911/09:** 1 C3 Premium Plaque Control
 - HX9911/27:** 1 C3 Premium Plaque Control
 - HX9912/18:** 2 C3 Premium Plaque Defence
 - HX9913/03:** 1 C3 Premium Plaque Control
1 W3 Premium White
 - HX9913/13:** 1 C3 Premium Plaque Control
1 W3 Premium White
 - HX9913/17:** 2 C3 Premium Plaque Control
 - HX9913/18:** 2 C3 Premium Plaque Control
 - HX9914/54:** 2 C3 Premium Plaque Defence
 - HX9914/55:** 2 C3 Premium Plaque Defence
 - HX9914/57:** 2 C3 Premium Plaque Defence
- **Glass Charger :** 1 (Only for HX9901/03, HX9903/03, HX9913/03, HX9911/03, HX9911/09, HX9911/13, HX9911/27, HX9913/03, HX9913/13, HX9913/17, HX9914/54, HX9914/55, HX9914/57, HX9917/88)
- **Glass Charger:** 2 (Only for HX9912/18)
- **Charger Base:** 1 (Only for HX9901/03, HX9911/03, HX9911/09, HX9911/13, HX9911/27, HX9911/39, HX9913/03, HX9913/13, HX9913/17, HX9913/18)
- **Charger Base:** 2 (Only for HX9914/54, HX9914/55, HX9914/57)

- **Travel Case:** Premium travel case (Only for HX9903/03)
- **Travel Case:** USB charging travel case (Only for HX9911/03, HX9911/09, HX9911/13, HX9911/27, HX9911/39, HX9913/03, HX9913/17, HX9913/18 & HX9917/88)

Service

- **Warranty:** 2-year limited warranty

Consumer Replaceable Parts

- No Specific issues.

Optional (accessories)

- No Specific issues.

HX9901, HX9903, HX9911, HX9912, HX9913, HX9914 & HX9917

Functions/features explanation

Our best ever toothbrush, for complete oral care

Feel confident, with 100% coverage

The DiamondClean Smart is our best toothbrush, for complete care. One highperformance brush heads let you focus on all areas of your oral health, and our Smart Sensor technology gives you personalized feedback and coaching..

Proven to improve oral health

- Removes up to 10x more plaque for a deep clean

DiamondClean users experience improved oral health

- Stains disappear for a brighter, whiter smile

Stay on track with a personalized progress report

- Start and keep up healthy habits

Let the DiamondClean 9000 adapt to your needs

- Personalized brushing experience
- Lets you know if you're pressing too hard
- Always know when to replace your brush heads

Personalized in-app coaching to perfect brushing

- Guides you to brush and highlights missed areas
- Up to 7x healthier gums in just 2 weeks
- Remove up to 100% more stains in just 3 days
- Takes you back to any missed spots for 100% coverage
- Start taking better care of your trouble areas
- Alerts you if you're pressing too hard
- Guides you to reduce your scrubbing

Optimize your brushing

- Make sure you're getting the most from your brush head
- Brush heads automatically select the optimal settings
- Choose from 4 modes and 3 intensity settings
- Premium charging glass and travel case

Enjoy a stylish and user-friendly design

- Simple to charge and style to boot
- Charge for up to two weeks of battery life

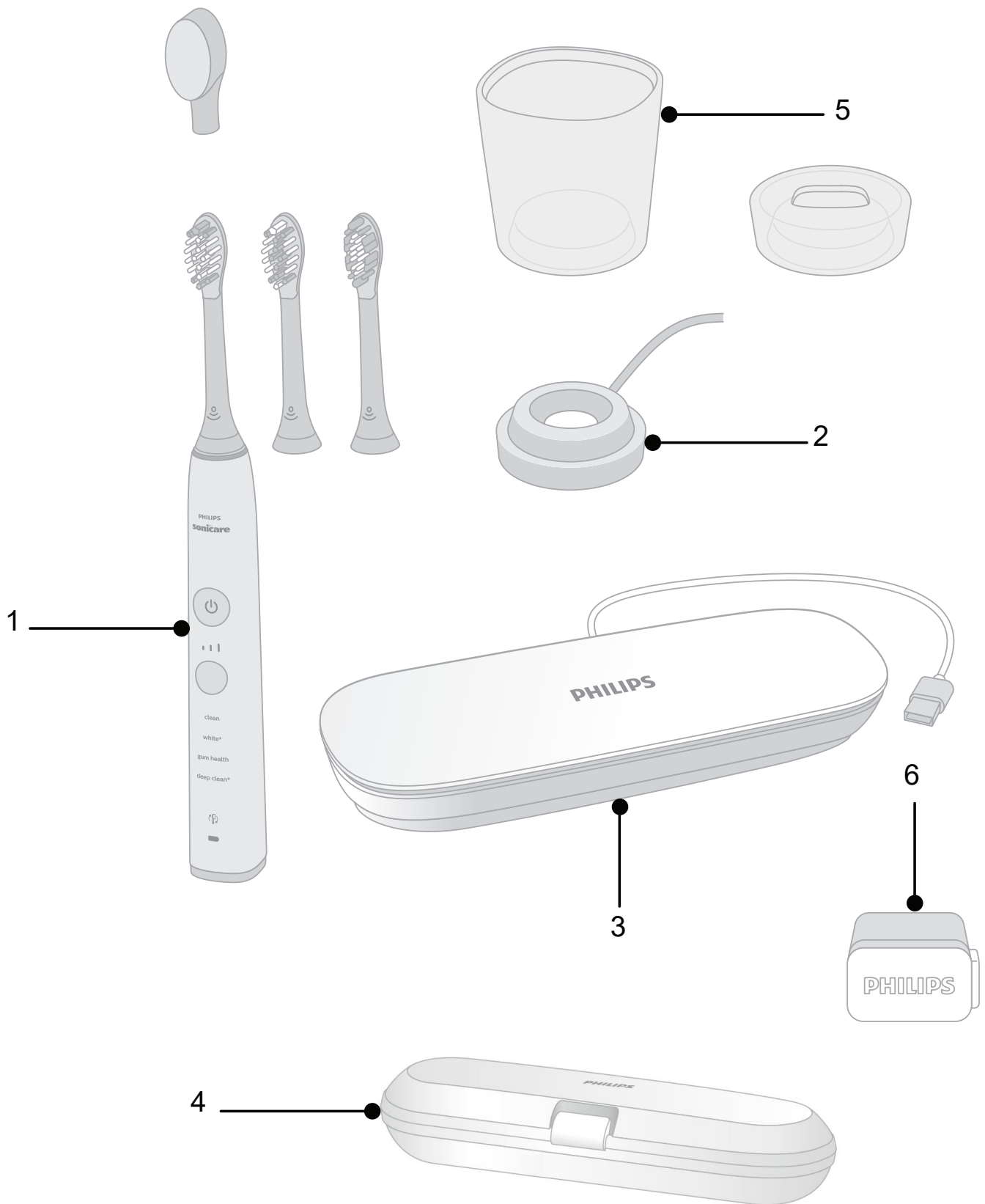
Service parts

Pos	Service code	Description	Remark	CRP
1*	4235 090 08522	HNDL HX992W		
	3000 042 66331	Handle Only HX991B - EU		
	3000 042 66311	Handle Only HX991W - EU		
2**	3000 042 66291	ASY_GLASS CHARGER BASE_COO_CN_CBA5001_OSAKA_EU_WHITE		
	3000 042 66281	ASY_GLASS CHARGER BASE_COO_CN_CBA6001_OSAKA_EU_BLACK		
	4235 010 40441	ASSY_CHARGER BASE_CBA1001_COO-CN_SHANGHAI_EU_CHRM SILVR WHT		
	4235 010 40431	ASSY_CHARGER BASE_CBA1001_COO-CN_SHANGHAI_UK_CHRM SILVR WHT		
	3000 042 88551	ASY_GLASS CHARGER BASE_COO_CN_CBA6001_OSAKA_UK_BLACK		
	3000 042 88561	ASY_GLASS CHARGER BASE_COO_CN_CBA5001_OSAKA_UK_WHITE		
3**	4235 010 39631	ASSY_TRAVEL CHARGING CASE_TCA2001_COO-CN_SHANGHAI_BLACK		
	4235 010 39632	ASSY_TRAVEL CHARGING CASE_TCA2001_COO-CN_SHANGHAI_BLACK		
	4235 010 39651	ASSY_TRAVEL CHARGING CASE_TCA1001_COO-CN_SHANGHAI_WHITE		
	4235 010 39652	ASSY_TRAVEL CHARGING CASE_TCA1001_COO-CN_SHANGHAI_WHITE		
4**	4235 010 39661	ASSY_TRAVEL CASE_COO-CN_SHANGHAI_WHITE		
	4235 010 39662	ASSY_TRAVEL CASE_COO-CN_SHANGHAI_WHITE		
5**	4235 090 08862	SERVICE, CHRGR GLSS HX99XX, EU		
6**	4235 010 14483	ASSY_WALL ADAPTOR_COO-CN_USB_TOKYO_EU		
	4235 010 41421	ASSY, WALL ADPTR, MILAN, WHITE, EU		
	3000 051 78211	ASSY_WALL ADAPTOR_HX9200/B_COO-CN_USB_TOKYO_EU_WHITE		
	3000 052 02961	ASSY_WALL ADAPTOR_WAA1001_COO-CN_USB_MILAN_EU_WHITE		
	4235 010 14492	ASSY_WALL ADAPTOR_CO-CN_TOKYO_USB_UK		
	4235 010 41751	ASSY_WALL ADAPTOR_WAA1001_COO-CN_USB_MILAN_UK_WHITE		
	3000 051 78241	ASSY_WALL ADAPTOR_HX9200/B_COO-CN_TOKYO_USB_UK_WHITE		
	3000 052 02911	ASSY_WALL ADAPTOR_WAA1001_COO-CN_USB_MILAN_UK_WHITE		
	4235 010 21232	ASSY_WALL ADAPTOR_HX9200_COO-CN_USB_TOKYO_EU_BLACK		
	3000 052 02891	ASSY_WALL ADAPTOR_WAA2001_COO-CN_USB_MILAN_EU_BLACK		
	3000 051 78231	ASSY_WALL ADAPTOR_HX9200/B_COO-CN_USB_TOKYO_EU_BLACK		
	4235 010 41771	ASSY, USB WALL ADPTR, MILAN, EU		

*Only available as a Warranty part. Warranty claims should be routed through the call center.

**Available as a Service part. Warranty claims should be routed to call centers.

Exploded view



Version history

21/09 Version 1.1 : HX9901/03, HX9903/03, HX9911/03, HX9911/09, HX9911/13, HX9911/27, HX9911/39, HX9912/08, HX9913/03, HX9913/13, HX9913/17, HX9913/18, HX9914/54, HX9914/55, HX9914/56, HX9914/57 & HX9917/88 initial release.



www.philips.com